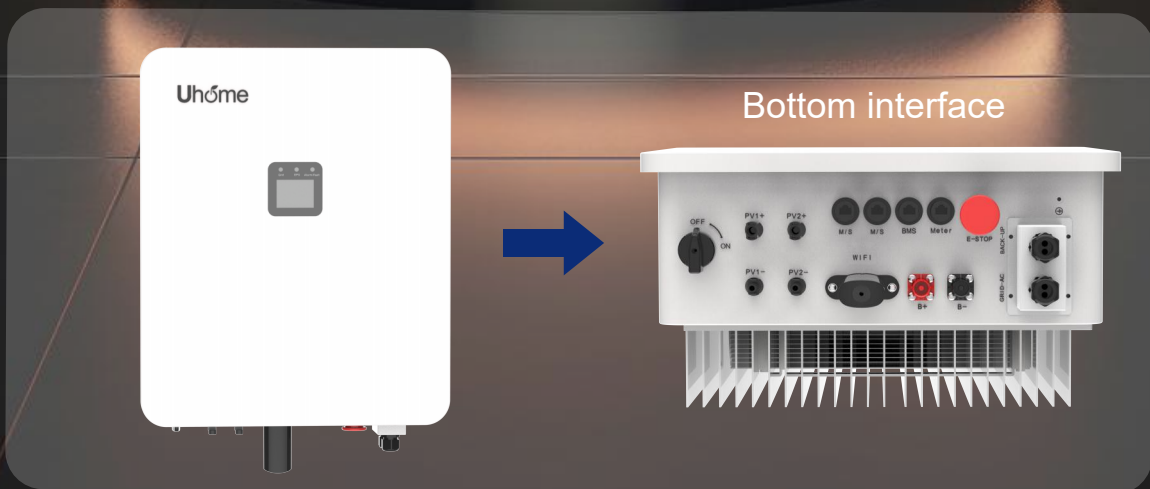


## 3.6/5.0/6.0kW Single Phase Inverter

- △ Efficient energy conversion
- △ Easy interactive operation
- △ Adapt to multiple application scenarios
- △ Multi working modes



# Technical Specifications

Model	Uhome-HB-1P3K6L1	Uhome-HB-1P5K0L1	Uhome-HB-1P6K0L1
<b>Input data (PV)</b>			
Max. recommended PV power	5000W	6600W	6600W
Max. DC voltage		500 Vd.c.	
Start voltage/Min. DC voltage		100V/80V	
MPPT voltage range		120~450V	
No. of MPPT trackers/No. of PV strings per MPPT tracker		2/1	
Max. input current per MPPT tracker		13A*2	
Max. short-circuit current per MPPT tracker		15.6A*2	
PV reverse - injected current		0A	
Types of DC over-voltage		Category II	
<b>Output data(AC)</b>			
AC nominal power	3680W	5000W	6000W
Max. AC output current	16A	20A	26A
Max. continuous input current	16A	20A	26A
Max. output short - circuit current		455A&4ms	
Max. output protection current	25A	30A	30A
Surge current		<30A	<32A
Rated grid voltage / Grid voltage range		230Vac/180-270Vac	
Rated grid frequency / Frequency range		50Hz(45~54Hz) / 60Hz(55~65Hz)	
Type of AC output		Single phase(L、N、PE)	
Power factor		≥0.99 (±0.8)	
Current Harmonic Distortion		≤3%(Rated power)	
Types of AC over-voltage		Category II	
<b>Backup power(AC)</b>			
AC nominal voltage		220Vac/230Vac/240Vac	
Rate of recurrence		50Hz/60Hz	
Rated current	16A	20A	26A
Max. output power	3680VA/3680W	5000VA/5000W	6000VA/6000W
Switching time between grid - connected and off - grid modes		10ms	
Voltage Harmonic Distortion		≤3%(linear load)	
Max. short - circuit output current		58.13A&92ms	
Max. peak power / duration		150%/10S	
Back - feed current is allowed		0A	
<b>Battery data(DC)</b>			
Battery type		Lithium - ion battery / lead - acid battery	
Rated Battery Voltage		48V	
Battery Voltage Range		40-60V	
Max. charging current	75A	100A	100A
Max. discharge current	75A	100A	100A
Charging curve		Three - stage type	
<b>System</b>			
Max. efficiency	97.5%		97.5%
PV - AC European efficiency	96.5%		96.7%
MPPT efficiency		99.9%	
Isolation mode (PV side)		Non - isolation	
Isolation Mode (Battery Side)		High - frequency isolation	
Protection Rating		IP65	
Dimension (W*D*H)		650*455*268 mm	
Protection function		DC insulation monitoring, DC monitoring, power grid monitoring, anti - islanding protection, short - circuit protection, over - heat protection, PV anti - reverse connection protection, battery anti - reverse connection protection.	
Operating Temperature Range		-10°C to +40°C	
Cooling mode		Natural air cooling	
Relative humidity		5~95%, Non - condensation	
Display		LCD	
Telecommunications		RS485 (standard configuration) , Wifi(selectable), . CAN-BUS(internal communication)	
Warranty		5 years	

**NOTE:** The range of output voltage and frequency may vary depending upon different grid codes. Specifications are subject to change without advance notice.